

iPassConnect 3.50 for Windows Mobile 6.0 User Guide

Version: 1.5, April 2008

Corporate Headquarters
iPass Inc.
3800 Bridge Parkway
Redwood Shores, CA 94065 USA



www.ipass.com
+1 650-232-4100
+1 650-232-0227 fx

TABLE OF CONTENTS

Getting Started	4
System Requirements	4
Supported Languages	4
Installation Instructions	4
Launching iPassConnect	4
Navigating the Menus	4
Configuring iPassConnect.....	5
Enabling Wi-Fi	5
Setting Credentials	5
Connecting and Disconnecting	6
Connecting to Open Access Points	6
Connecting to Privacy Enabled Access Points.....	6
Disconnecting	7
Using iPassConnect.....	7
Scanning Access Points	7
Auto Connect	7
Using Bookmarks.....	8
Phonebook Updates	9
Post Connect Launch	9
VPN Integration and iPassConnect	10
Connection History	11
Help and Support.....	11
Connection Log.....	11
Uninstalling iPassConnect	11

Copyright © 2008, iPass Inc. All rights reserved.



TABLE OF CONTENTS

Trademarks

iPass, iPassConnect , and the iPass logo are trademarks of iPass Inc. All other brand or product names are trademarks or registered trademarks of their respective companies.

Warranty

No part of this document may be reproduced, disclosed, electronically distributed, or used without the prior consent of the copyright holder.

Use of the software and documentation is governed by the terms and conditions of the iPass Corporate Remote Access Agreement, or Channel Partner Reseller Agreement.

Information in this guide is subject to change without notice.

Every effort has been made to use fictional companies and locations in this manual. Any actual company names or locations are strictly coincidental and do not constitute endorsement.



Getting Started

This guide describes the installation, configuration and use of iPassConnect™ 3.50 for Windows Mobile 6.0.

iPassConnect 3.50 for Windows Mobile 6.0 allows remote users to connect to the Internet using Wi-Fi through iPass' vast network of providers.

System Requirements

- Windows Mobile 6.0 Powered Device
- Supported WLAN adapter
- 600 KB of available memory

Supported Languages

- English only

Installation Instructions

Before installation, you must download the CAB file installer to your device. This can be done through ActiveSync using its File Explorer. Alternatively, you can download it from your company intranet or service provider's web site or as mail attachment. You can also transfer the CAB file to the device using removable storage cards.

To install iPassConnect on your device:

1. Download the iPassConnect installation CAB file and copy it to your device.
2. Open Explorer, locate and tap the CAB file to begin installation. Note that existing versions, if any, will be over-written.
3. The installation wizard takes you through the various steps to complete the installation. You must accept the EULA in order to install the software. Once the installation process is complete, you will see an iPassConnect icon in the Programs list. Your device is now ready to connect.

Launching iPassConnect

To launch iPassConnect: Tap Start > Programs > iPassConnect.

Navigating the Menus

You can navigate through the menus and make selections either by tapping the appropriate option or by using soft keys in case of PDAs. In case of Smartphone, navigation and selection is done exclusively through the use of navigation keys and soft keys.

Configuring iPassConnect

Configuration of the device is pretty straightforward. iPassConnect will automatically detect the Wi-Fi adapter available on your device and auto configure it. Confirm that the Wi-Fi has been enabled before launching the application and attempting to connect.

Enabling Wi-Fi

You should verify that Wi-Fi has been enabled before you proceed further. The Wi-Fi could have been disabled, like for instance when the battery is running low.

To enable Wi-Fi:

1. Tap **Start > Programs**.
2. Tap
 - **Communication Manager** in case of PocketPC.
 - **Wireless Manager** in case of Windows Mobile 6.
3. If the **WLAN** button has been grayed out, it means Wi-Fi is disabled.

*Alternately, tap **Settings > Wireless LAN Settings** to view the Wi-Fi Status.*
4. Tap the **WLAN** button to enable Wi-Fi.
5. Tap **Exit**.



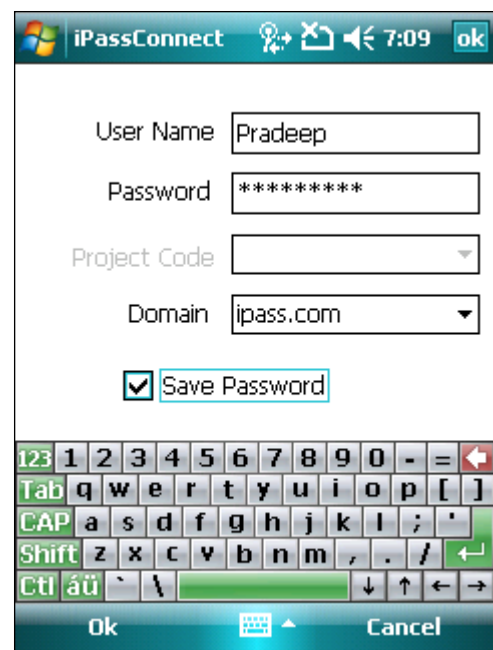
Setting Credentials

Before connecting for the first time, you should confirm that your login credentials have been entered correctly.

To Set your Login Credentials:

1. Tap **Menu > Settings > Login Information**.
2. Enter your **User Name** and **Password** in appropriate fields.
3. Under **Project Code** enter your department or project.
4. Select the domain name from the **Domain** list. Alternately, type the domain name in the field.

Check with your help desk to see if the above two values are required in order to log in.
5. Select the **Save Password** check box if you want iPassConnect to store your password.



6. Tap **OK**.

Connecting and Disconnecting

You can connect to any local Wi-Fi access points within range of your device provided you have the requisite credentials to access the hotspot.

iPassConnect will automatically display all the detected Wi-Fi hotspots in the **Available Wireless Network** list, sorted in order of iPass enabled hotspots and then by signal strength. Two types of Wi-Fi hotspots are displayed in the list, iPass enabled Networks distinguished by the iPass logo and Personal Wi-Fi Networks. Signal strength for each network will be displayed using bars next to the name.

Connecting to Open Access Points

Connecting to the desired access point is as simple as tapping the name of the access point.

To Connect to an Open Access Point:

1. Tap the name of the desired access point in the **Available Wireless Network** list. The **Connected To** dialog is displayed upon getting connected.
2. Select the **Disable Power Suspend** check box, if you wish to prevent the device from going into Sleep mode.

Connecting to Privacy Enabled Access Points

In case of privacy enabled hotspots, the Network Settings screen would be displayed where you need to specify the encryption mode and key. You can also bookmark these hotspots so that you wouldn't need to re-enter the encryption information each time you try to connect.

To Connect to Privacy Enabled Personal Wi-Fi Network:

1. Tap the connection name in the **Available Wireless Network** list. The **Network Settings** screen is displayed.
2. Select the encryption mode from the **Mode** drop-down list. Select **None** if the access point doesn't use any security encryption.
3. In **Network Key**, enter the encryption key.
4. If the **Enable Auto Connect** check box is selected, then **Auto Connect** will attempt to use this Access Point to connect automatically, in case of connection drops.

See **Auto-Connect** on page 7 for more details.

5. Tap **OK** to connect.

You may configure settings for as many personal Wi-Fi networks as you wish and store them as Bookmarks. See **Using Bookmarks** on page 8 for more details.

Select the **Disable Power Suspend** check box, if you wish to prevent the device from going into Sleep mode.

Disconnecting

To disconnect from the currently connected hotspot: Tap **Disconnect**.

Using iPassConnect

iPassConnect is equipped with numerous features that makes the application extremely user friendly. For instance, performance has been enhanced in this version by improving the time taken to connect, disconnect or cancel a connection attempt. Some of the other features are described below.

Scanning Access Points

iPassConnect automatically detects all local iPass-enabled Wi-Fi networks and displays them in the **Available Wireless Network** list. You can refresh the list, if required, by rescanning as described below.

To Re-scan for Local Wi-Fi Access Points: Tap **Menu > Synchronize > Rescan**

Auto Connect

This is a feature by which iPassConnect tries to connect automatically after a timeout once the application has been started. It also tries to re-connect automatically whenever a connection has been implicitly dropped.

If Auto Connect has been enabled, iPassConnect uses various parameters to determine the best hotspot for connecting. It tries to connect repeatedly until the maximal retry limit is reached before starting all over again using the next hotspot in the list.

In case of non-iPass Networks, the End User can decide whether to use a particular hotspot for Auto-Connect or not.

To Enable/Disable the Auto Connect feature:

1. Tap **Menu > Settings > Auto Connect**.
2. Select the **Enable for iPass networks** check box to enable Auto Connect using iPass networks.

Note that Auto Connect using iPass networks will also be affected by the administrator settings.

3. Select the **Enable for non iPass networks** check box to enable Auto Connect using non-iPass network.

These two check boxes are active only if they have been enabled by the administrator.



4. Use **Max Retries** to specify the maximum number of times Auto Connect should attempt to re-connect before giving up on this hotspot.

5. Tap **OK**.

In case of non-iPass network, additional configuration has to be done in order to enable Auto Connect using these hotspots.

6. Tap **Menu > Bookmark**. The bookmark list is displayed.
7. Select the non-iPass Bookmark you wish to configure for Auto Connect.
8. Tap **Menu > Details**.
9. Select the **Enable Auto Connect** check box to enable Auto Connect using this hotspot.
10. Tap **OK** to save configuration.

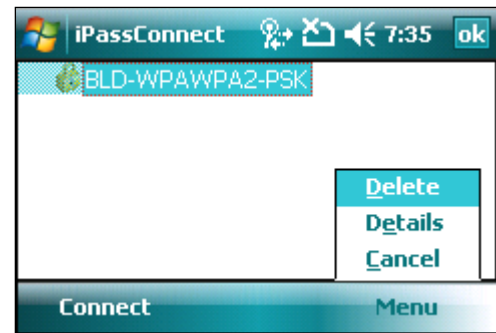
Using Bookmarks

Bookmarks allow you to conveniently save and re-use connection information of access points you frequently use. There is no limit to the number of access points you can bookmark. However, as too large a list of bookmarks can become unwieldy to use, we recommend you limit the number of bookmarks to 15. You can bookmark an access point from the **Connected To** or the **Wi-Fi Settings** dialog.

To connect using an Existing Bookmark:

1. Tap **Menu > Bookmark**.
2. Select the bookmark you wish to use and tap **Connect**.

Bookmarks can become obsolete when the Phonebook is updated. If you fail to connect to a bookmark, that access point might have changed or been removed. Check your current Phonebook to see if the access point is still valid.



To Bookmark an Access Point from the 'Connected To' dialog:

1. In the **Available Wireless Network** list, tap the access point you wish to bookmark. iPassConnect connects to the Wi-Fi hotspot and displays the **Connected To** dialog box.
2. Tap **Menu > Bookmark**.

To Bookmark an Access Point from the 'Wi-Fi Settings' dialog:

1. In the **Available Wireless Network** list, tap the access point you wish to bookmark. In case of privacy enabled hotspots, the **Wi-Fi Settings** dialog box is displayed.
2. Type an appropriate value in **Network** key,
3. Tap **Menu > Bookmark**.
4. Tap **OK**.

To Modify a Bookmark:

1. Tap **Menu > Bookmark**.
2. Select the bookmark you wish to modify and tap **Menu > Details**.

3. Make appropriate changes.
4. Tap **OK**.

To Delete a Bookmark:

1. Tap **Menu > Bookmark**.
2. Select the bookmark you wish to delete and tap **Menu > Delete**.
3. Tap **Yes** to confirm deletion.

Phonebook Updates

The iPassConnect Phonebook has been reduced in size to minimize the amount of storage needed on your device. Instead of an entry for each and every hotspot location, only a directory of network names is maintained, which is updated via the phonebook update function. You should update the phonebook to ensure you have the most recent version; this can be done by configuring it for automatic update or opting for a manual update, as and when required.

To Setup Automatic Phonebook Updates:

1. Tap **Menu > Settings > Phonebook**.
2. Select the **Automatically check for phonebook updates** check box.
3. Tap **OK**. iPassConnect will now check for and download phonebook updates upon every connection.

To Perform a Manual Phonebook Update:

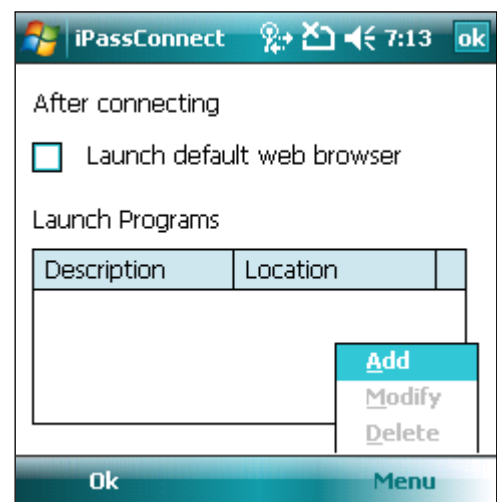
1. Connect to the iPass network.
2. Tap **Menu > Synchronize > Phonebook**. The phonebook is updated and the status page is displayed.

Post Connect Launch

You can use the **Post Connect Launch** feature to configure iPassConnect to launch other programs automatically after connecting. For example, you can launch your Web browser or another program, such as an e-mail client, by adding it to the launch list.

To configure iPassConnect to launch the default Web browser upon connection:

1. Tap **Menu > Settings > Post-connect Launch**. The **Post-connect Launch** dialog box is displayed.
2. Select the **Launch default web browser** check box.
3. Tap **OK**.

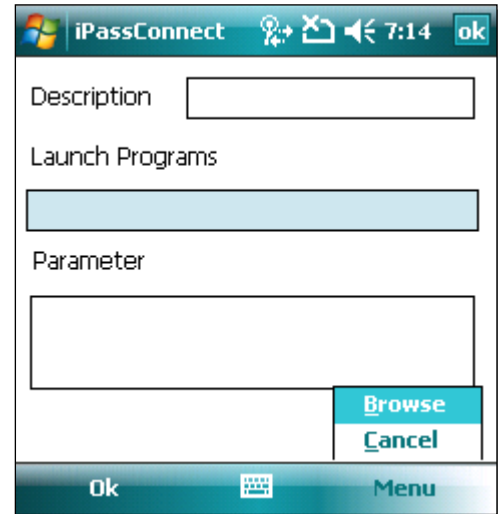


To configure iPassConnect to launch other programs upon connection:

1. Tap **Menu > Settings > Post-connect Launch**. The **Post-connect Launch** dialog box is displayed.
2. Tap **Menu > Add**.
3. Type an appropriate description for the program under **Description**.
4. Under **Launch Programs**, tap **Menu > Browse**. Navigate to the program you wish to launch, and tap its name.
5. If the selected application requires additional parameters from the command line, type those in the **Parameter** box using the keyboard.
6. Tap **OK** when done.

To modify an entry in the Launch Programs list:

1. Tap **Menu > Settings > Post-connect Launch**. The **Post-connect Launch** dialog box is displayed.
2. Select the program you wish to change from the **Launch Programs** list.
3. Tap **Menu > Modify**.
4. In the **Add/Edit Post-Connection Program** dialog box, make appropriate changes as required, like altering the description, parameters, or specifying a new location for the program.
5. Tap **OK**.

**To delete an entry from the Launch Programs list:**

1. Tap **Menu > Settings > Post-connect Launch**. The **Post-connect Launch** dialog box is displayed.
2. Select the program you wish to delete from the **Launch Programs** list.
3. Tap **Menu > Delete**.

This procedure does not delete the program from your device, only from your Launch Programs list.
4. Tap **OK**.

VPN Integration and iPassConnect

A Virtual Private Network (VPN) is a program that securely connects you to your corporate network. You can run your VPN as a post-launch action by selecting it as a program to run after connection. The configuration of your VPN determines whether you need to enter more credentials in addition to those used to connect to the iPass network. Contact your Help Desk for more information.

Connection History

You can use **Connection History** to connect quickly to recently-used access points without having to search for it. History normally displays twenty most recent successful connections.

 This feature is not available on Smartphones.

To Connect using History:

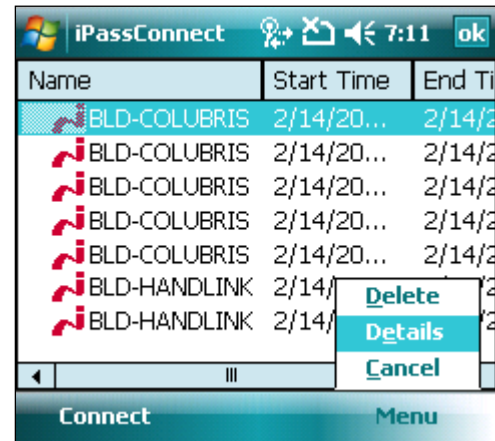
1. Tap **Menu > History**.
2. Select the connection you wish to use.
3. Tap **Connect**.

To Clear History:

1. Tap **Menu > History**.
2. Tap **Menu > Delete** to clear all the previous connections.

To View the Connection Setting:

1. Tap **Menu > History**.
2. Select the connection whose settings you wish to view.
3. Tap **Menu > Details**.



Help and Support

The online help provides brief information on most of the important features in iPassConnect. In addition you can also search for specific topic using keywords.

To View the iPassConnect Online Help System: Tap **Menu > Help > Help Topic**.

Connection Log

The connection log – when enabled – contains the diagnostic information of your past connection attempts – including both successful and unsuccessful attempts – and other online activities. This information can be useful to technical support people while diagnosing access problems.

Under normal circumstances, there is no need to enable connection logs.

Uninstalling iPassConnect

To Uninstall iPassConnect from your device:

1. Tap **Start > Settings**.
2. Tap the **System** tab.
3. Tap **Remove Programs**.
4. Tap iPassConnect in the Remove Programs list. Tap **Remove** to uninstall iPassConnect from your device.